

ABM'S CYBER

(Also known as CE)

ESSENTIALS PROCESS

Discussion



This open conversation is just to establish the specific usage of your technology, for example are there shared drives? Do you allow employees to use their PC's in their lunch?

Testing



Our system tests are designed to reveal weak points within your infrastructure, these need to be secured before continuing with the CE evaluation.

Evaluation

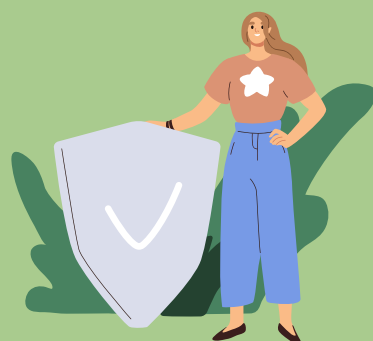


We complete the entire document for you, as long as all of the information we require is available to us, we will ensure all questions are answered correctly and data supplied.



Check & Change

Cyber Essentials requires you to look over the data we have collated, at this point you can check to see if all answers provided are accurate to your knowledge.



Submit

Your application for certification will be submitted. While responsibility falls on you to ensure all data is correct, you can be confident that a professional IT company completed it.